

PART OF THE S.W. 1/4, OF SEC. 28, T.7N., R.1W., S.L.B. & M.

NORTH OGDEN
BLOCK 16, PLAT A

IN NORTH OGDEN CITY

SCALE 1" = 50'

TAXING UNIT: 10

SEE PAGE 26

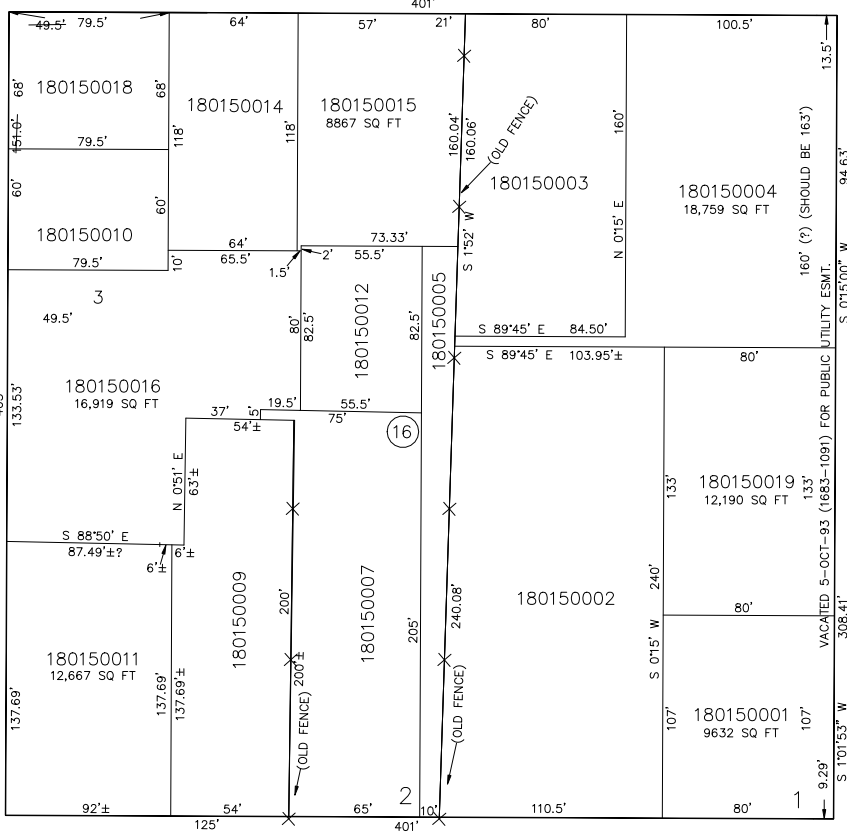
2700 NORTH STREET

S 89°45' E

650 EAST STREET

N 0°15' E

SEE PAGE 16



700 EAST STREET

SEE PAGE 14

2650 NORTH STREET

S 89°45' E

SEE PAGE 12